



June 2, 2008

**First Coast Water, LLC
5151 Sunbeam Road Suite 21
Jacksonville, Florida 32257**

Re: Hendrx Atmospheric Watermaker

An electrical performance test was conducted upon Hendrx Model # HR-77A, Serial # HRE 110809US00209 at our test facilities located @ GenPower Technologies, LLC 720 Mill Creek Road, Jacksonville, Florida during the dates from June 2, 2008 through June 4, 2008.

The aforementioned equipment arrived at our facilities packaged from the factory, empty without water.

The following performance testing on the aforementioned equipment was conducted utilizing our calibrated "Dent Power Quality Analyzer," with voltage stabilization through Liebert UPS.

Fill Test

1. Start Time	June 2, 2008	9:55 A.M.	87 degreesF, 61.5% RH
2. Full/Stop	June 2, 2008	8:29 P.M.	83 degreesF, 64% RH
3. Power consumed		5.4 KW	
4. Cost		\$.59	

Chill Water Test

1. Start Time	June 3, 2008	4:21 P.M.	90 degreesF, 54% RH
2. Cold/Stop	June 3, 2008	4:59 P.M.	90 degreesF, 56% RH
3. Power consumed		.380 KW	
4. Cost		\$.04	

Maintaining the water @ 42 degrees farenheit in 90 degree testing ambient resulted in chill water compressor operating for duration times of the following: 4:21 p.m. through 4:59 p.m., 7:42 p.m. through 8:00 p.m., 01:26 p.m. through 01:45 p.m., 07:52 a.m. through 08:08 a.m.

Hot Water Test

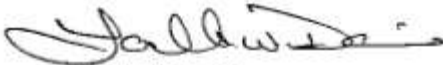
1. Start Time Heating	June 3, 2008	5:21 p.m.
2. Stop/Heat	June 3, 2008	5:59 p.m.
3. Power consumed	.360 KW	
4. Cost	\$.039	

Please review attached electrical, and temperature charting.

Conclusion:

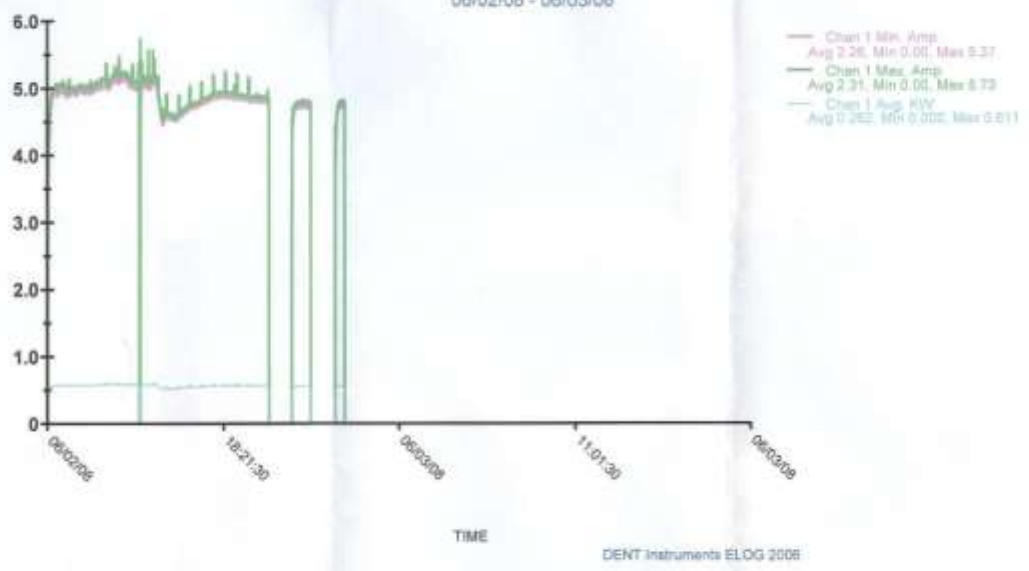
The Hendrx HR-77A tested very efficient in producing drinking water @ \$.19 per gallon and produced 3 gallons capacity within 11 hours at rated temperature and relative humidity. The Hendrx HR-77A chilled that capacity to 42 degrees within 38 minutes at a cost of \$.04. Heating had very similar results.

Respectfully,



Lavelle W. Davis
GenPower Technologies, LLC

Waterfest fill
06/02/08 - 06/03/08

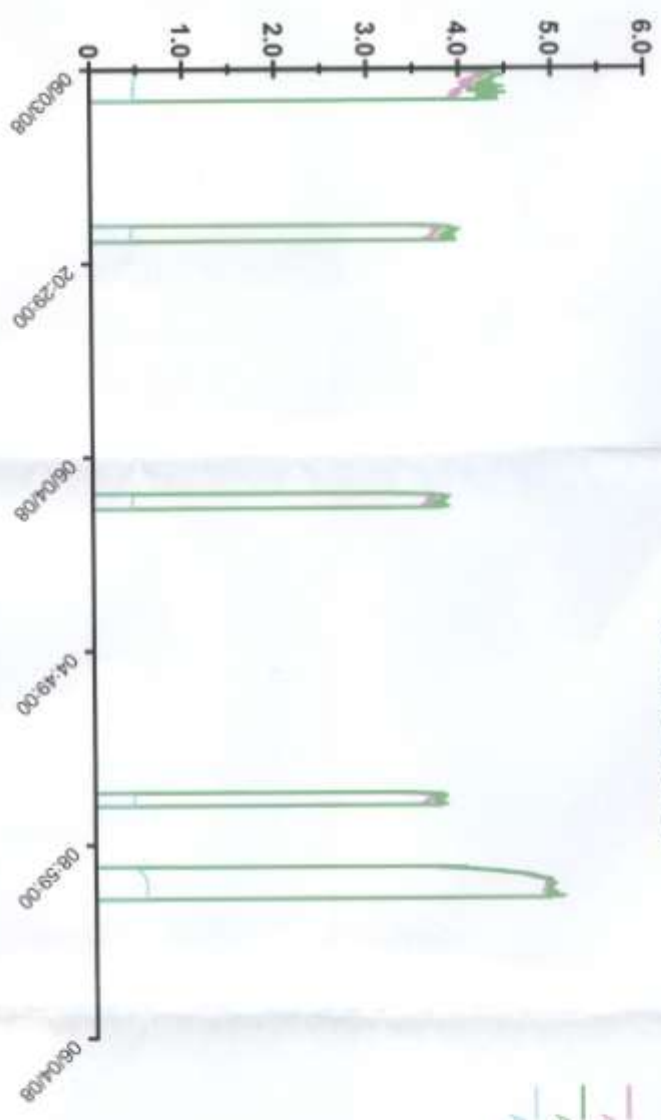


GenPower



From:- 02 June 2008 09:51:50 To:- 03 June 2008 08:10:50

Waterrest cold
06/03/08 - 06/04/08



— Chan 1 Min. Amp
Avg 0.47, Min 0.00, Max 4.92

— Chan 1 Max. Amp
Avg 0.50, Min 0.00, Max 5.08

— Chan 1 Avg. PAV
Avg 0.056, Min 0.000, Max 0.558

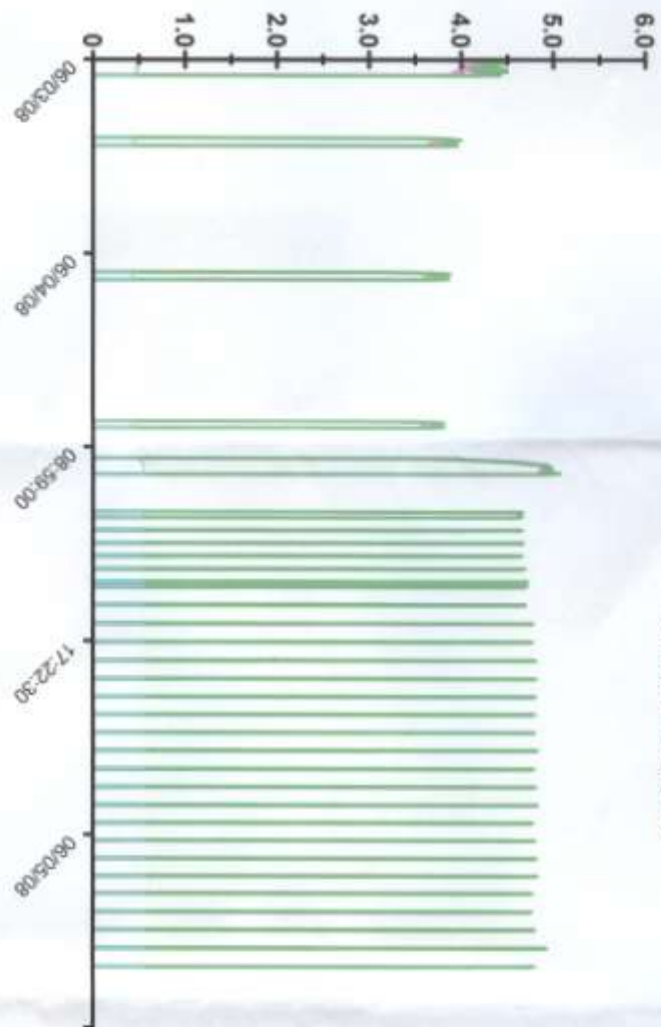
TIME
DENT Instruments ELOG 2006

GenPower



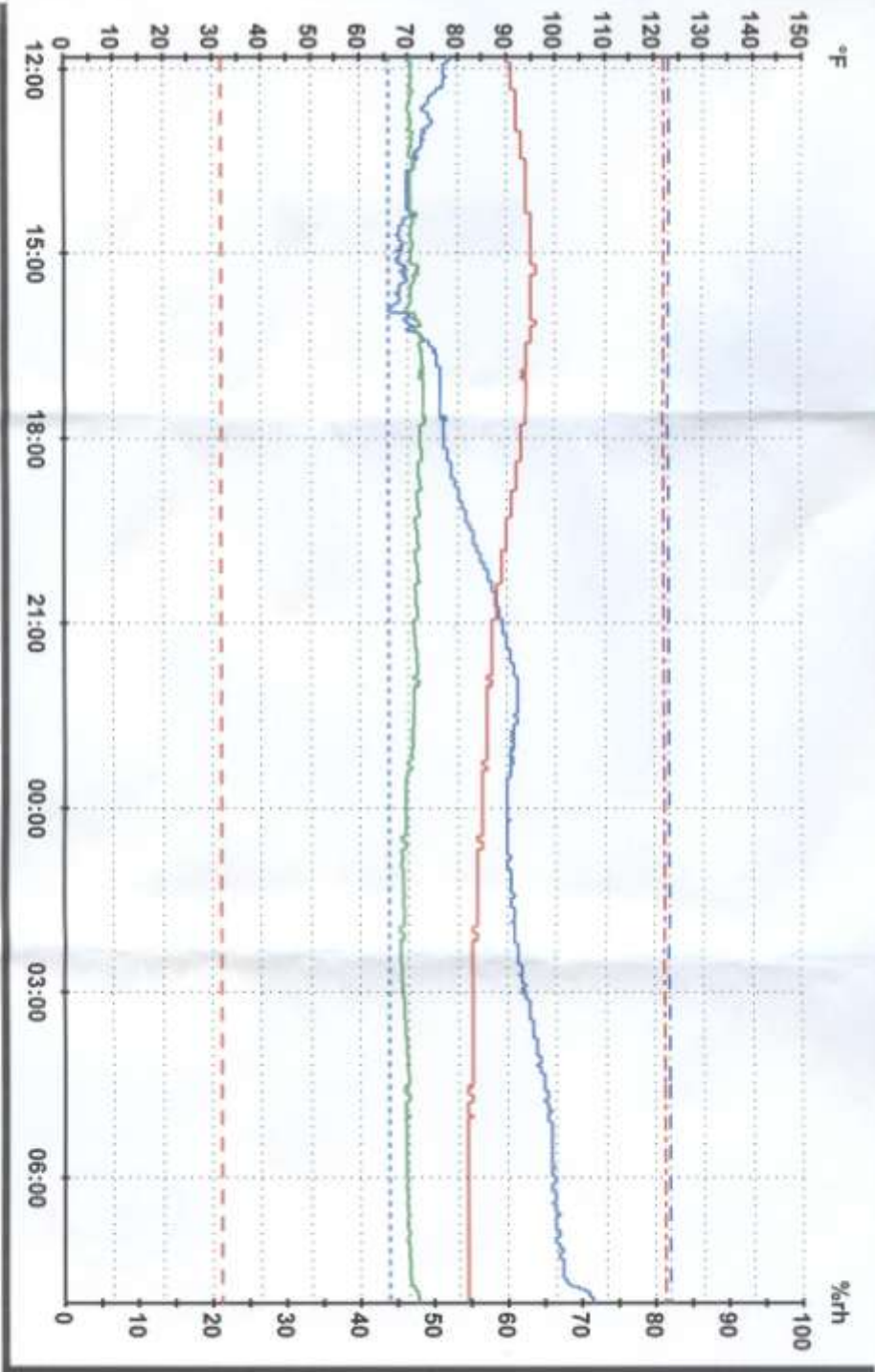
From:- 03 June 2008 16:21:06 To:- 04 June 2008 11:44:06

Watertest heat 06/03/08 - 06/05/08



Chan 1 Min Amp
Avg 0.35, Min 0.00, Max 4.92
Chan 1 Max Amp
Avg 0.41, Min 0.00, Max 5.08
Chan 1 Avg kW
Avg 0.044, Min 0.000, Max 0.582

GenPower



From: 04 June 2008 11:48:49 To: 05 June 2008 08:01:49